

Fig. 1 à 8. — Locomoti

Fig. 1. — Chemin de fer du Sud de la France.

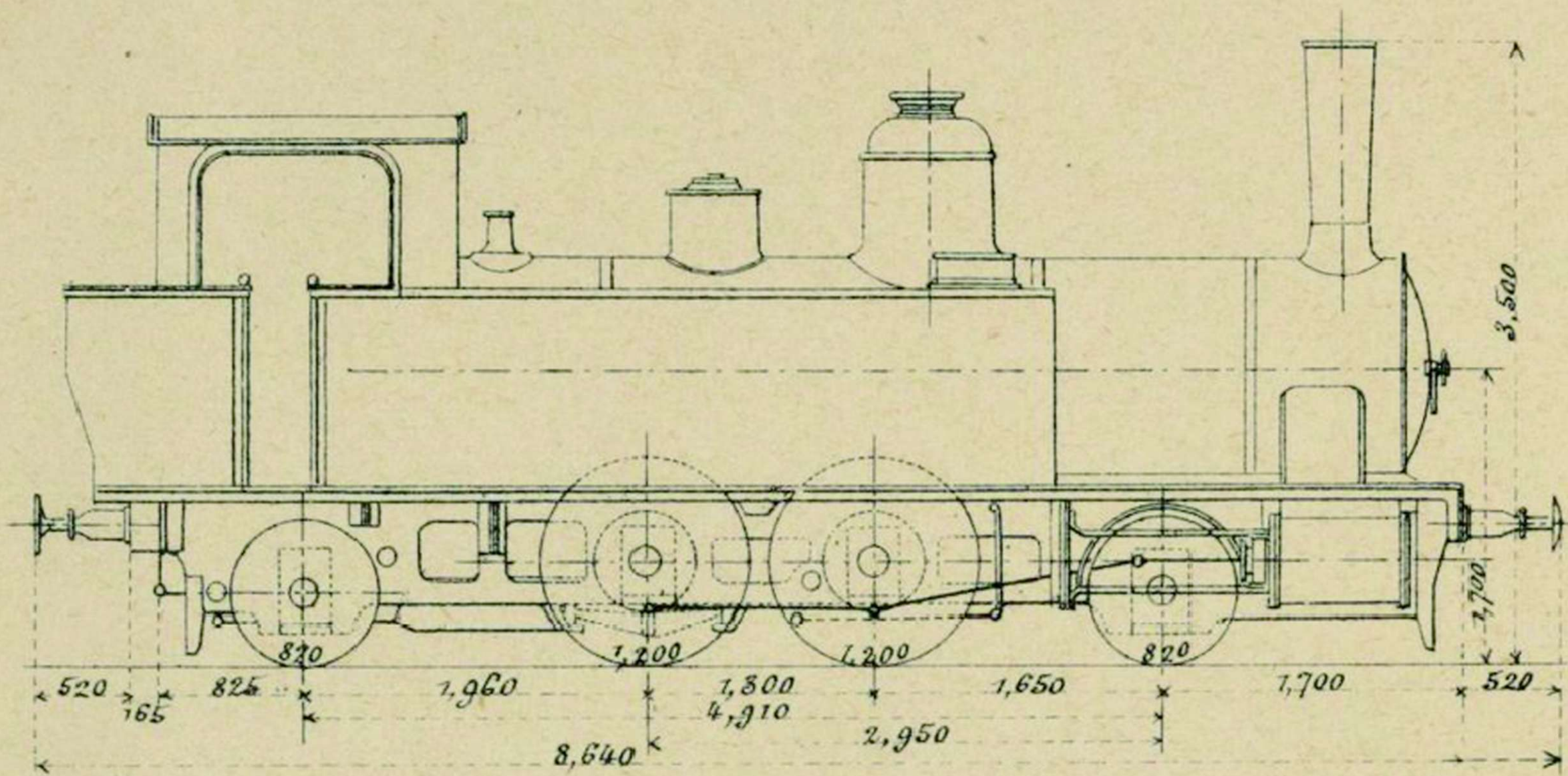


Fig. 2. Société générale des Chemins de fer économiques.

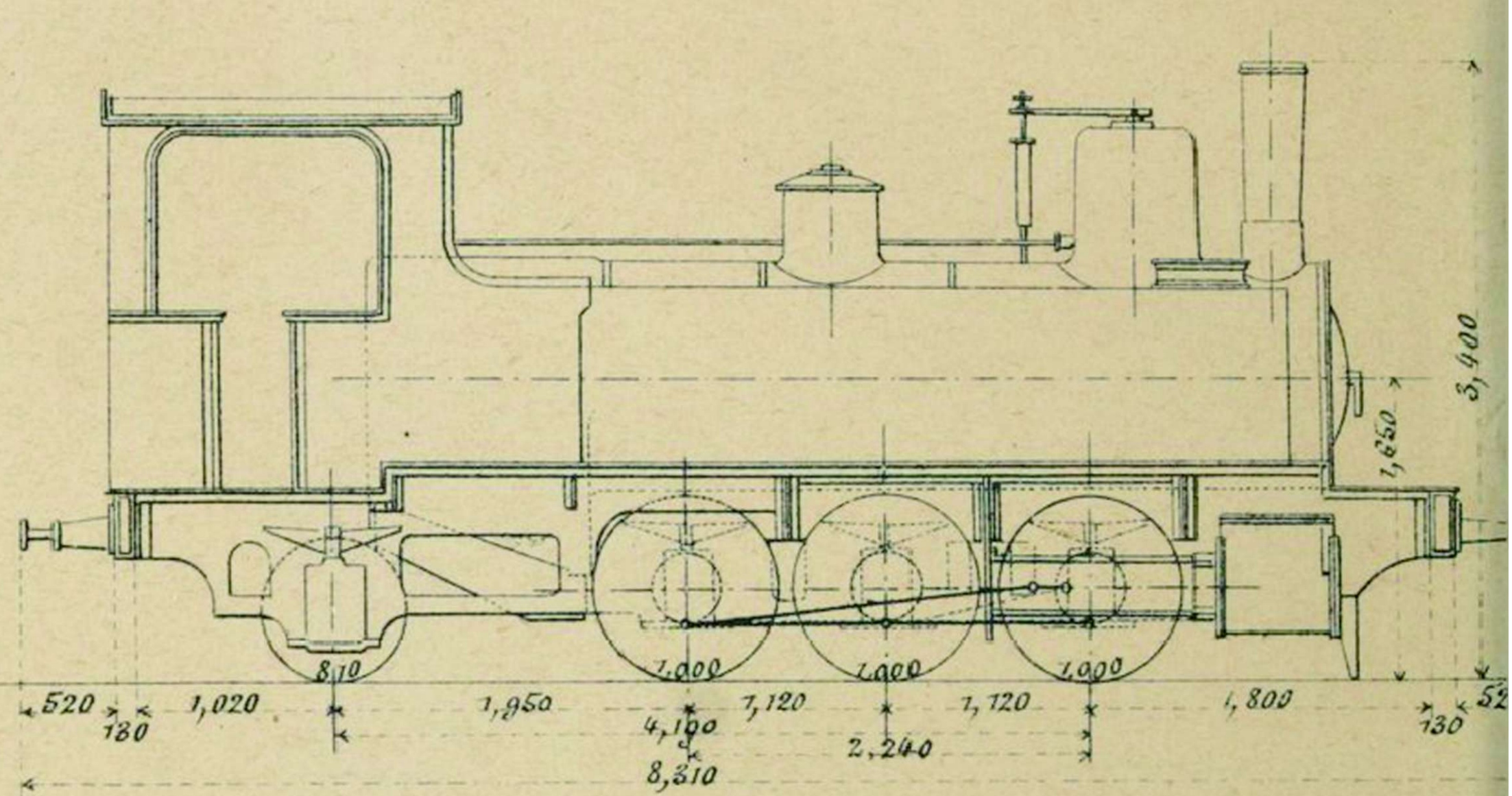


Fig. 5. Chemin de fer de Riom à Volvic (Puy-de-Dôme)

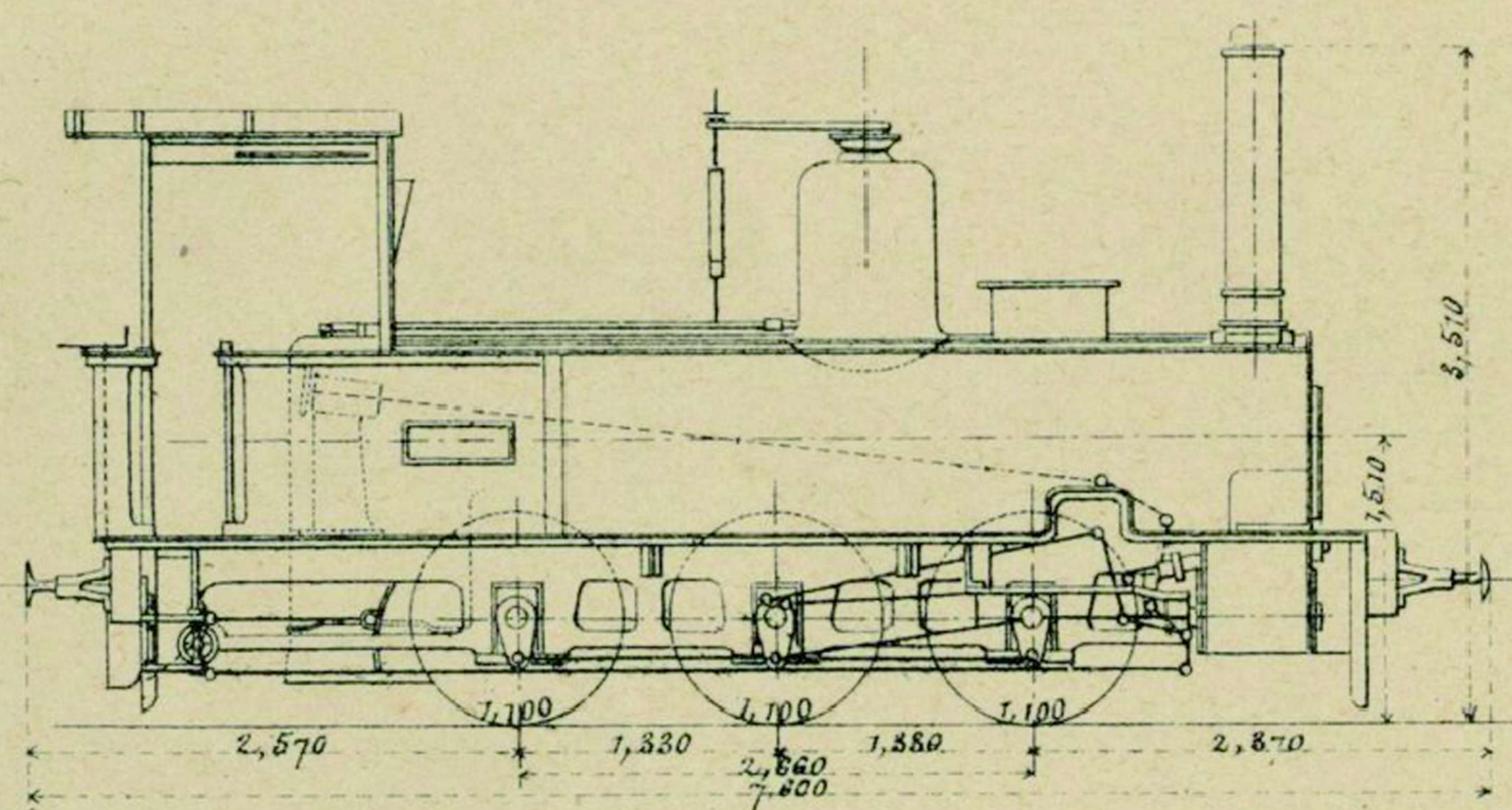


Fig. 6. Chemins de fer Argentins.

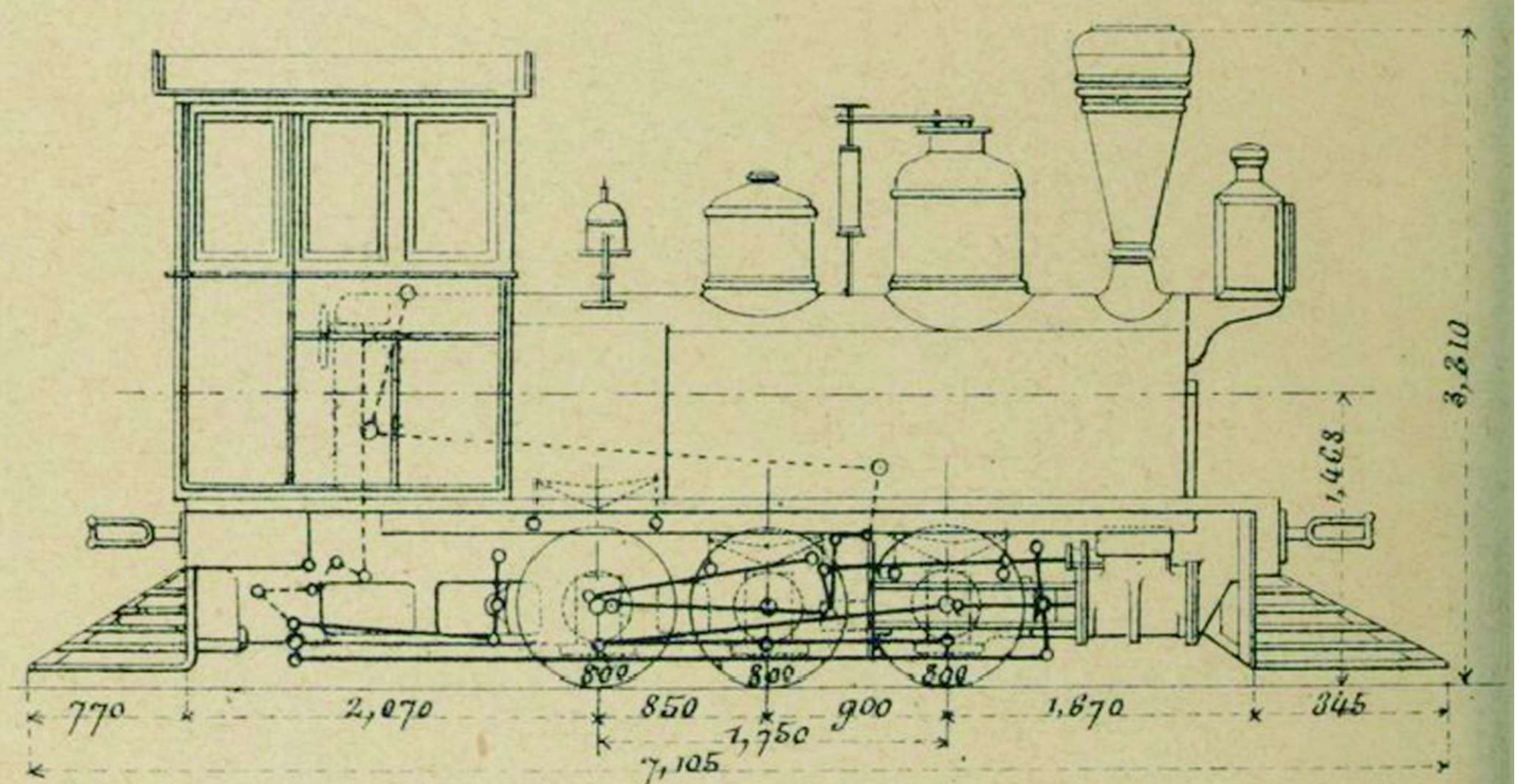


Fig. 9. — Locomotive pour voie de 0<sup>m</sup>91.

Fig. 9. Porter et C<sup>ie</sup> (Etats-Unis)

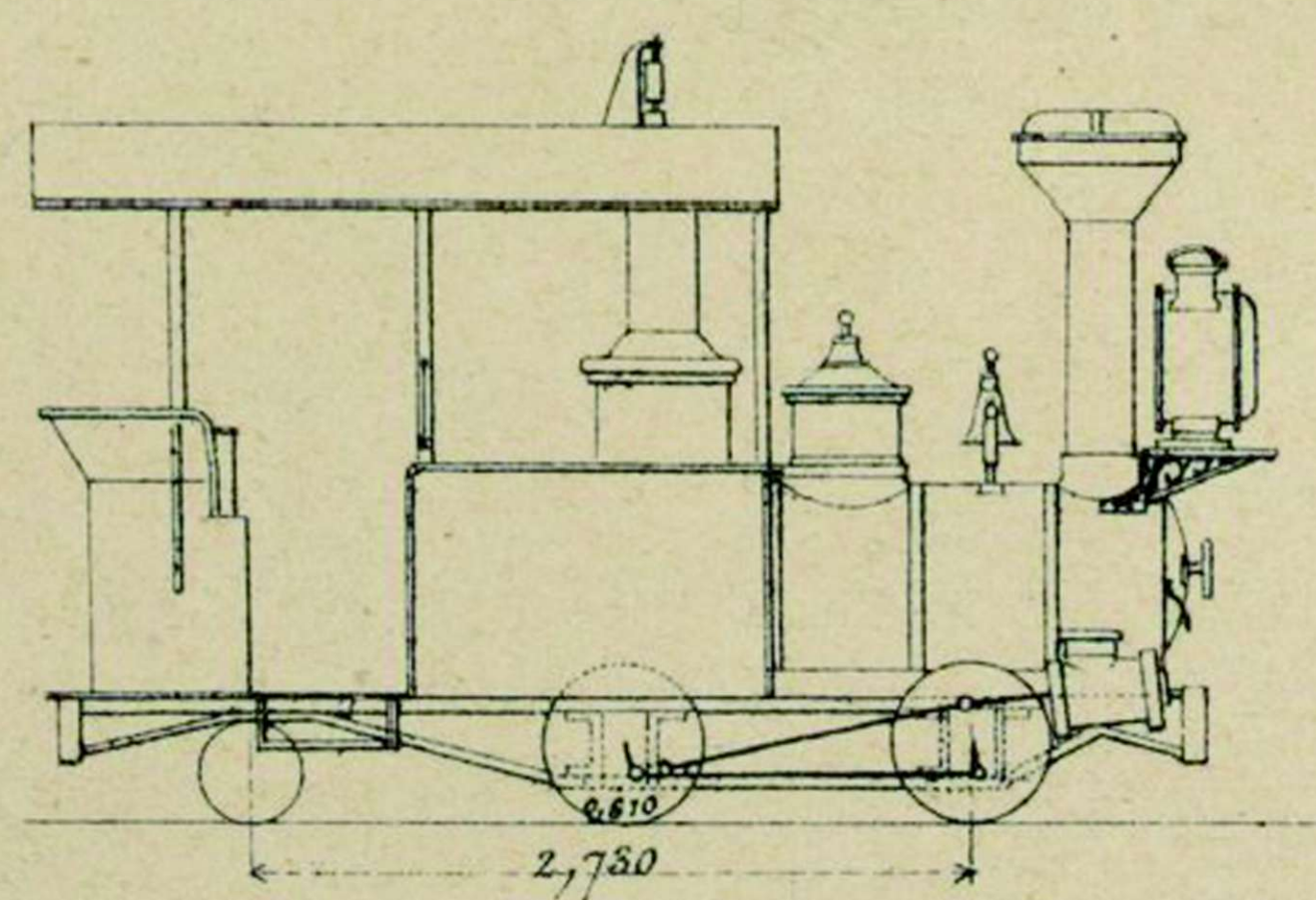
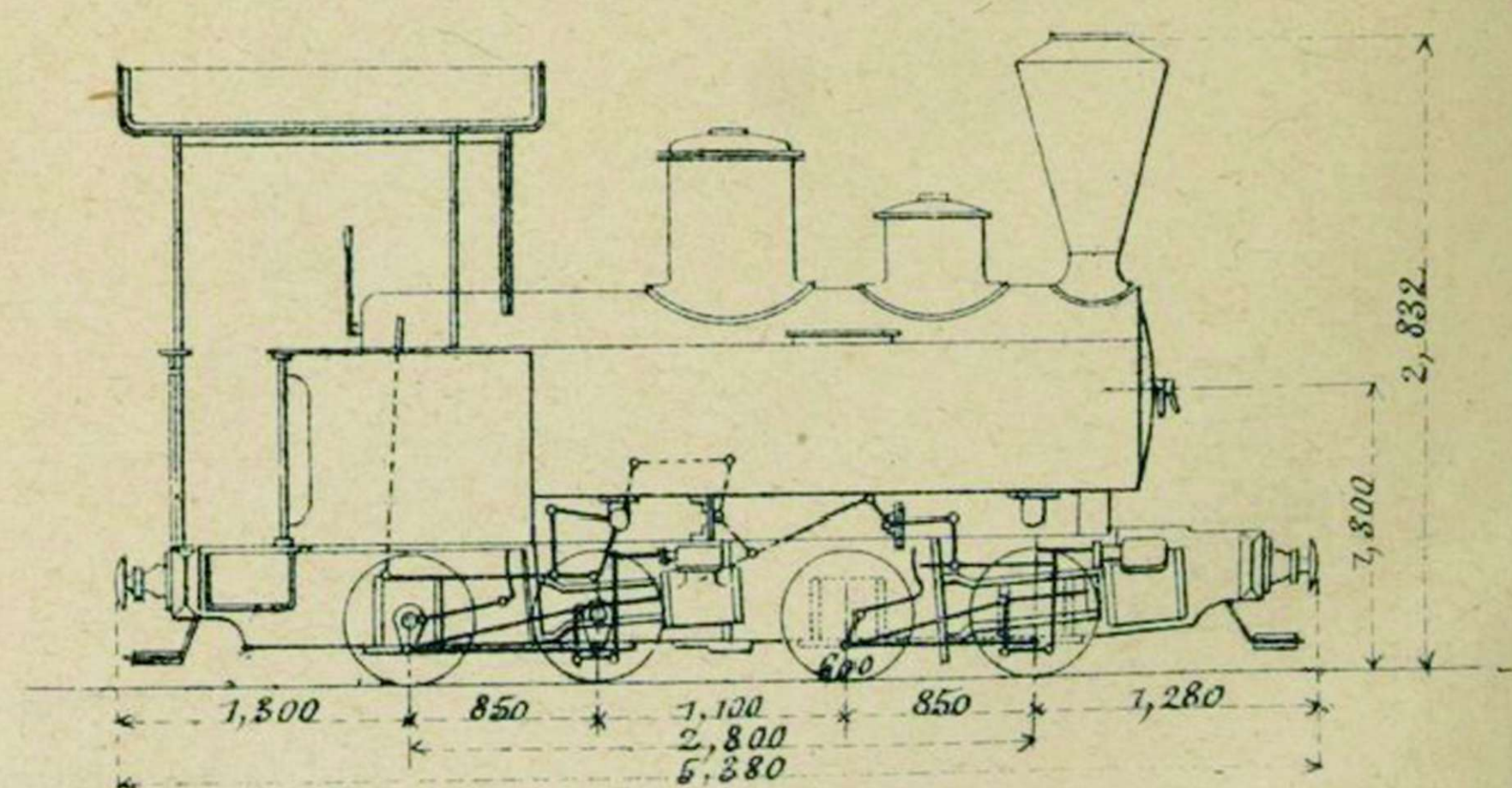


Fig. 10 et 11. — Locom

Fig. 10. Chemin de fer de l'Exposition.  
Système Mallet.



s pour voie de 1<sup>m</sup>00.

Fig.3. Chemin de fer de la Meuse.

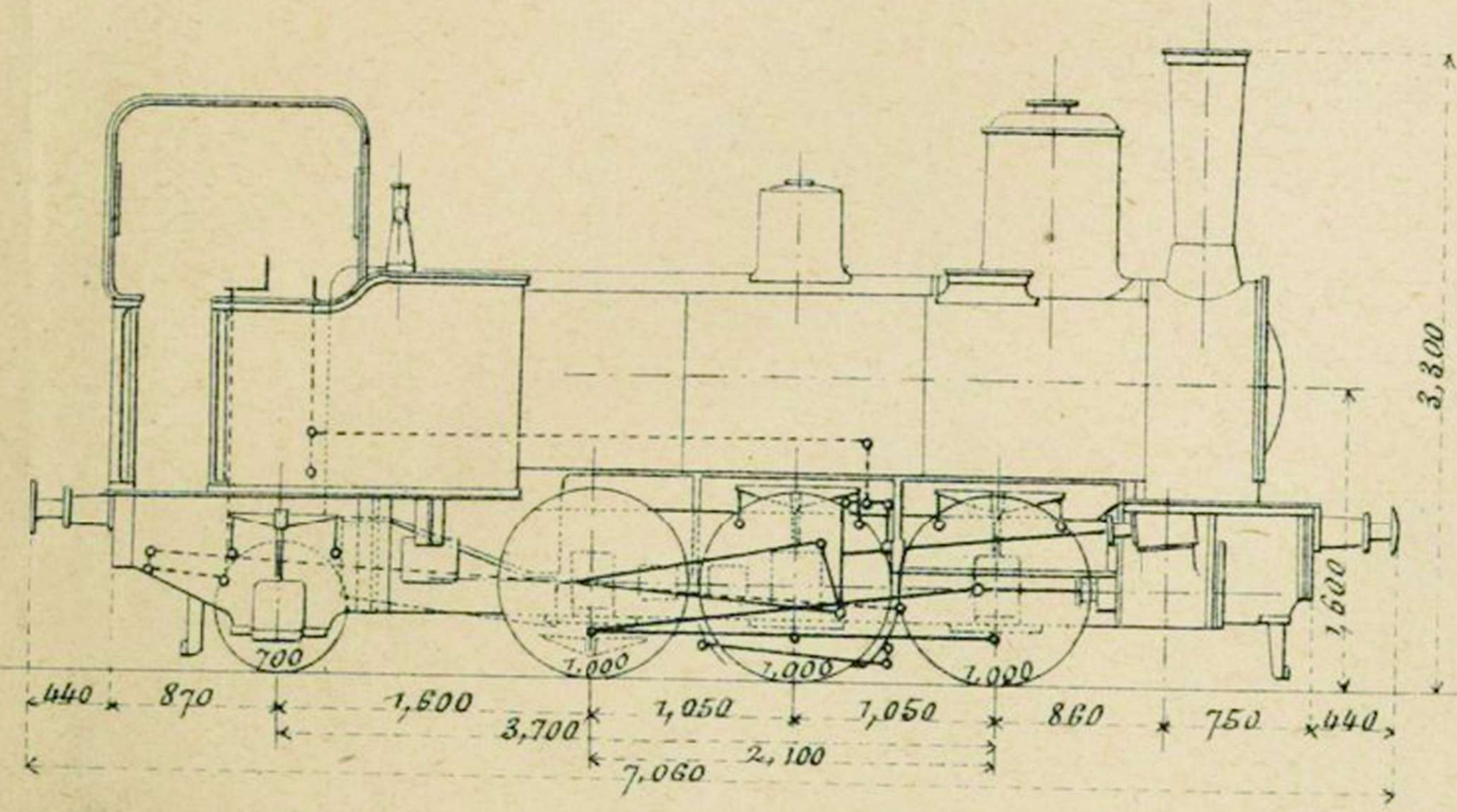


Fig.4. Chemin de fer de Bône - Guelma. (Algérie)

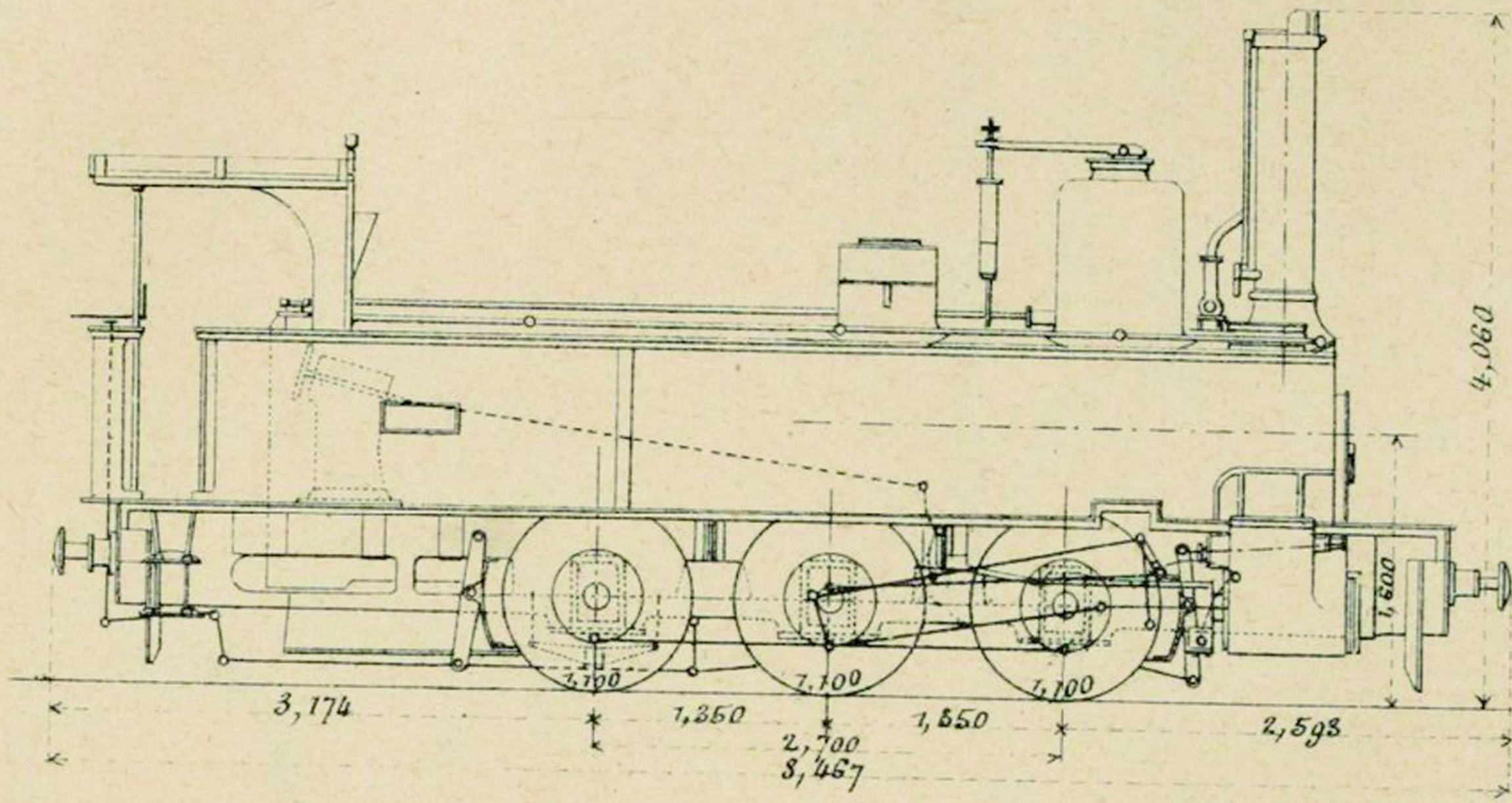


Fig.7. Société des Chemins de fer Vicinaux Belges.

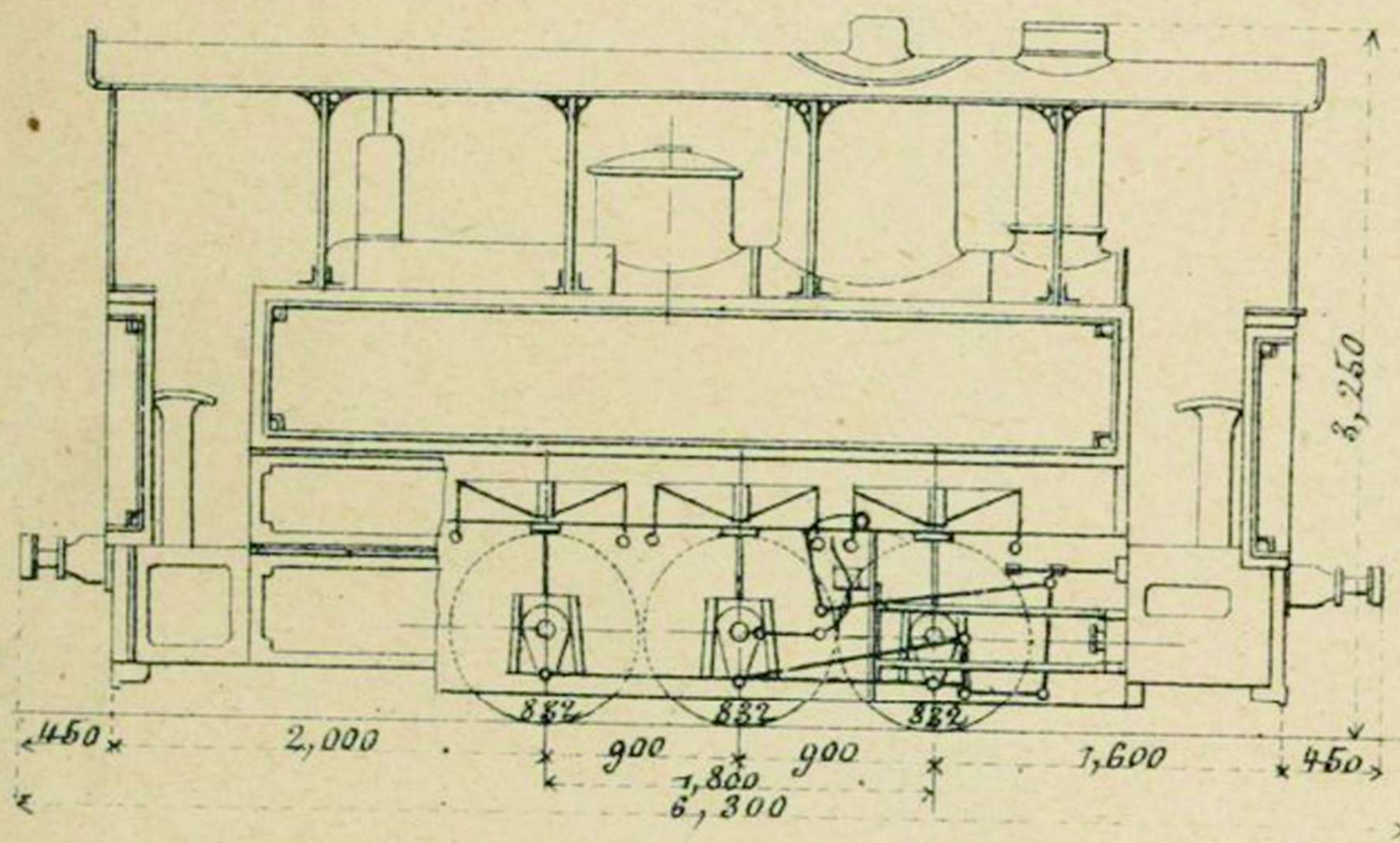
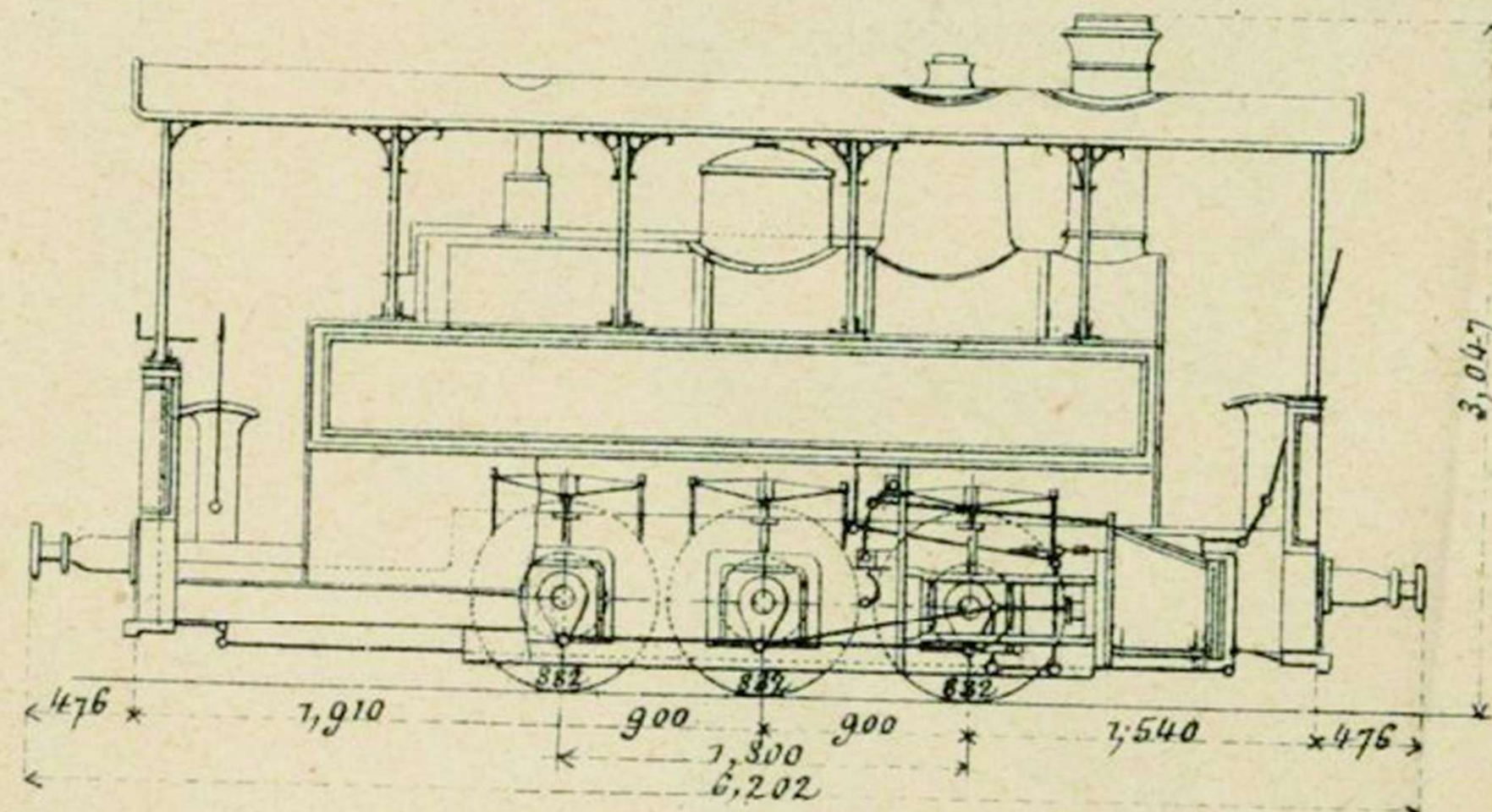


Fig.8. Société des Chemins de fer Vicinaux Belges



s pour voie de 0<sup>m</sup>60.

Fig.11. Chemin de fer de l'Exposition. Système Péchot-Bourdon.

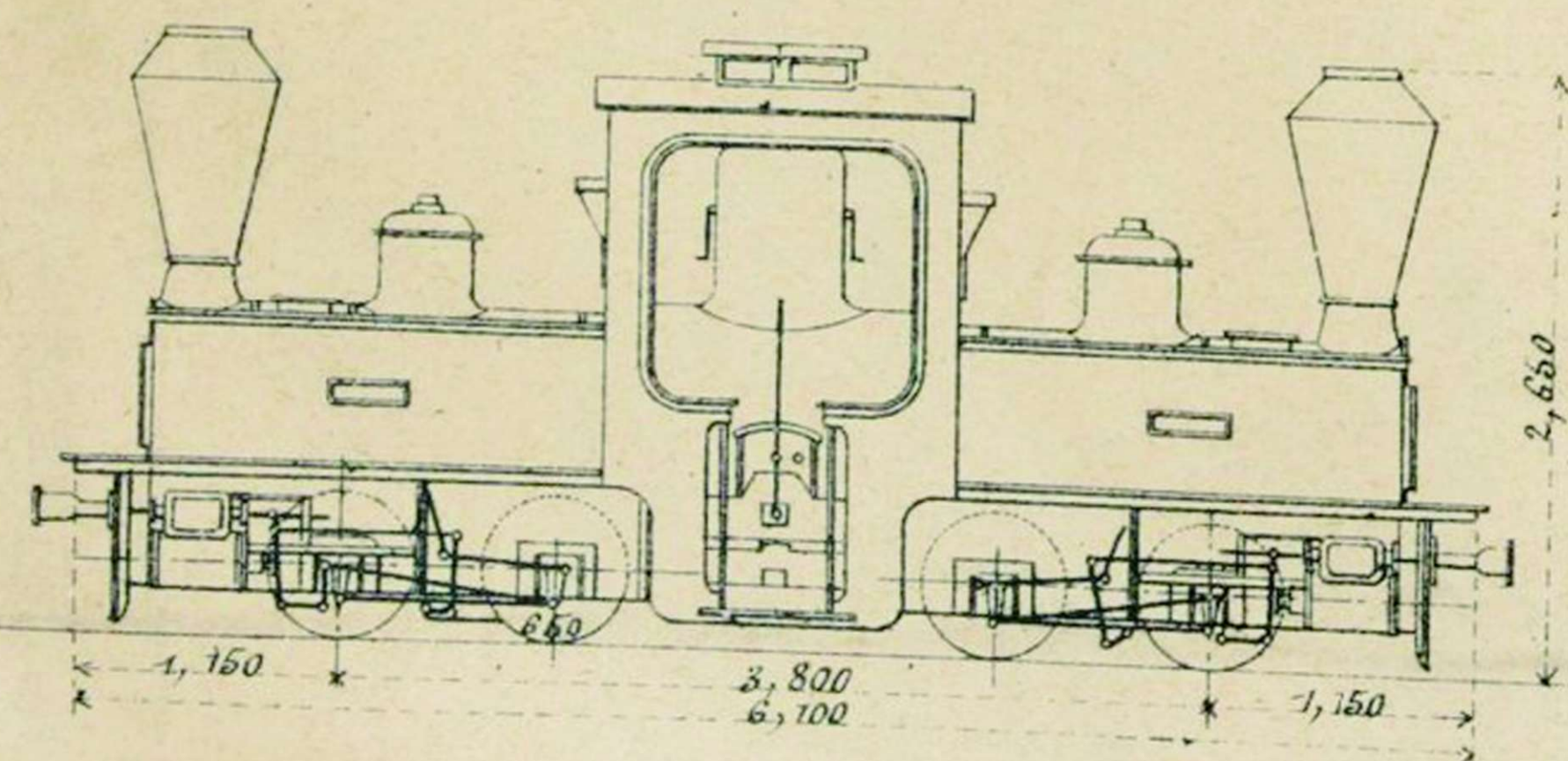
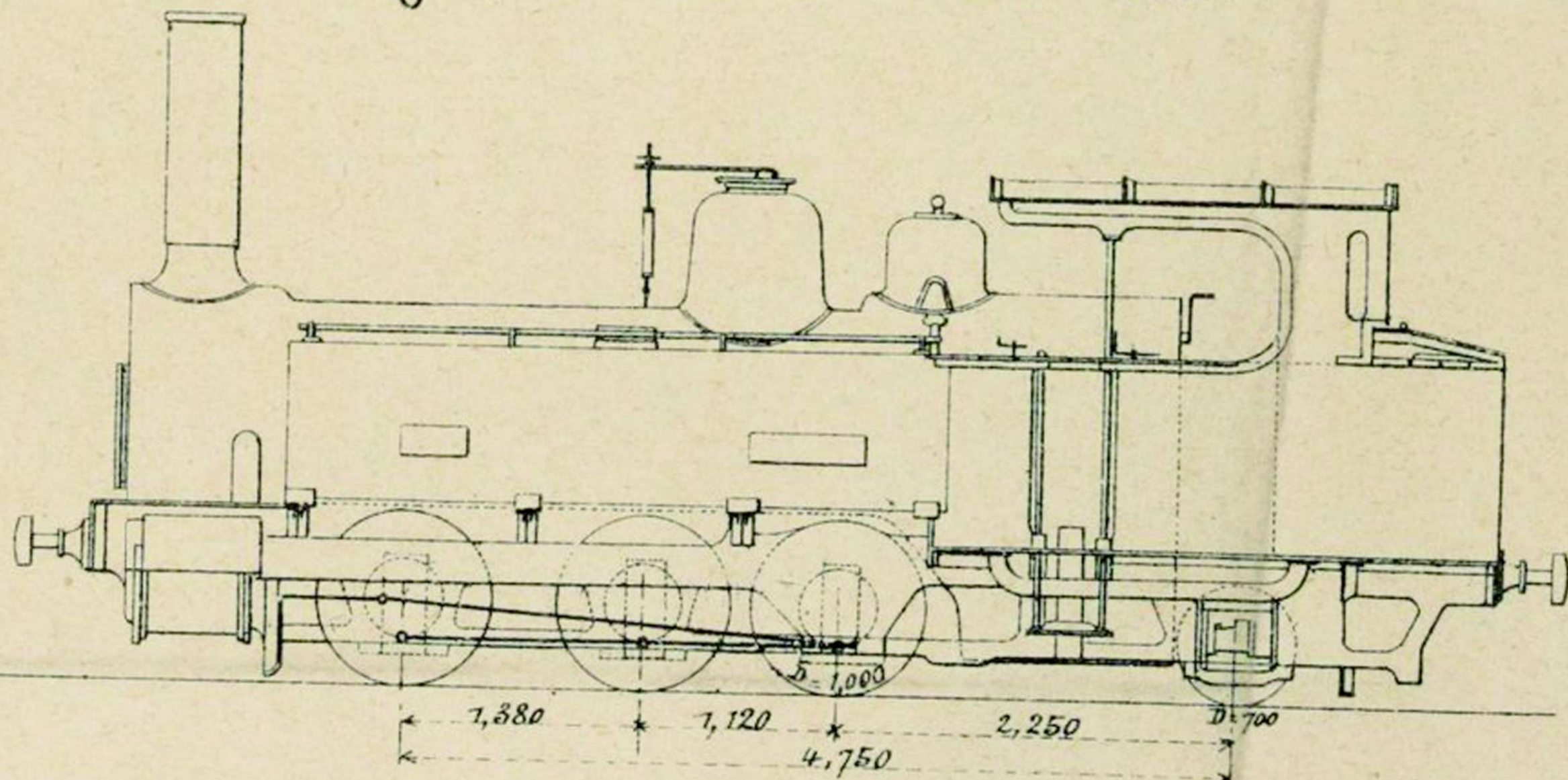


Fig.12. Locomotive pour voie de 1<sup>m</sup>00.

Fig.12. Chemin de fer de la Mure.



quai des Augustins, Paris.

Fig.2.Élévation.

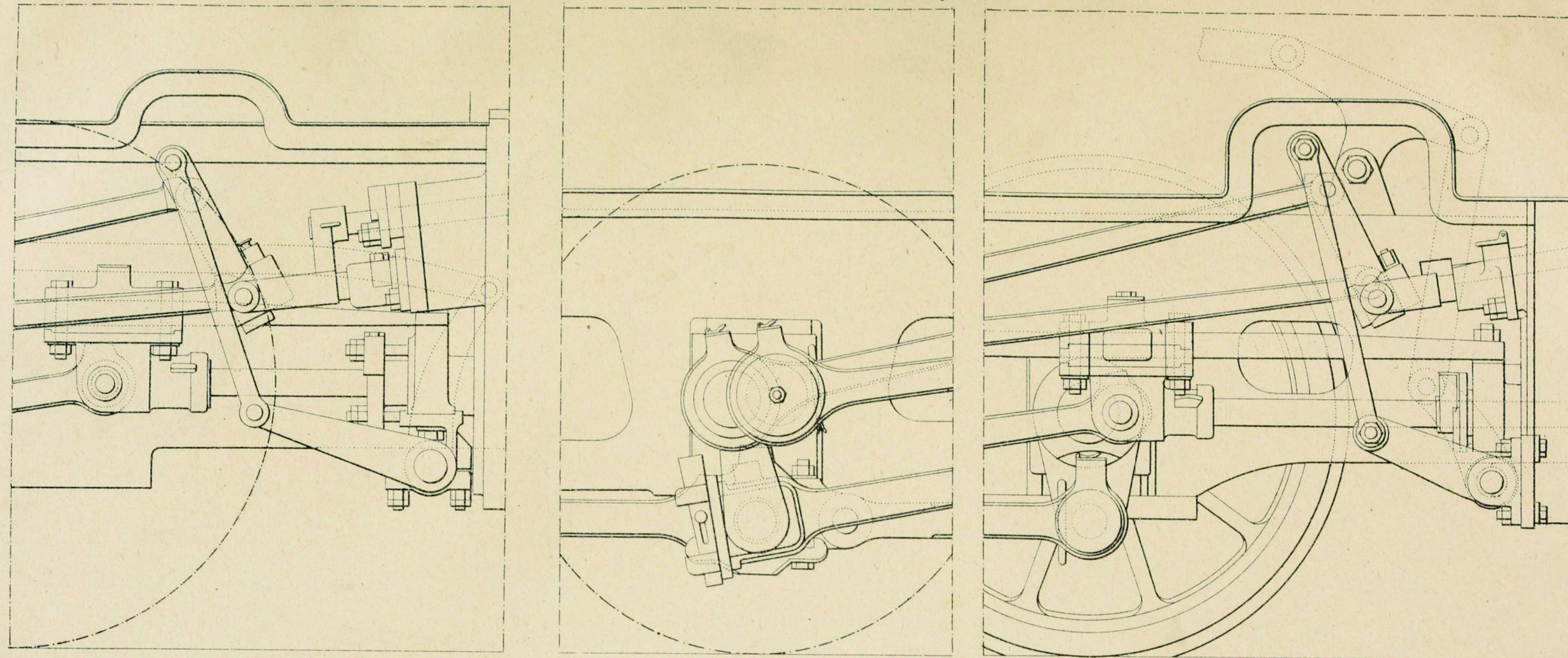


Fig.3. Plan.

Fig. 1.  
Distribution des Locomotives  
de la C<sup>ie</sup> du Chemin de fer de  
Bône-Guelma.

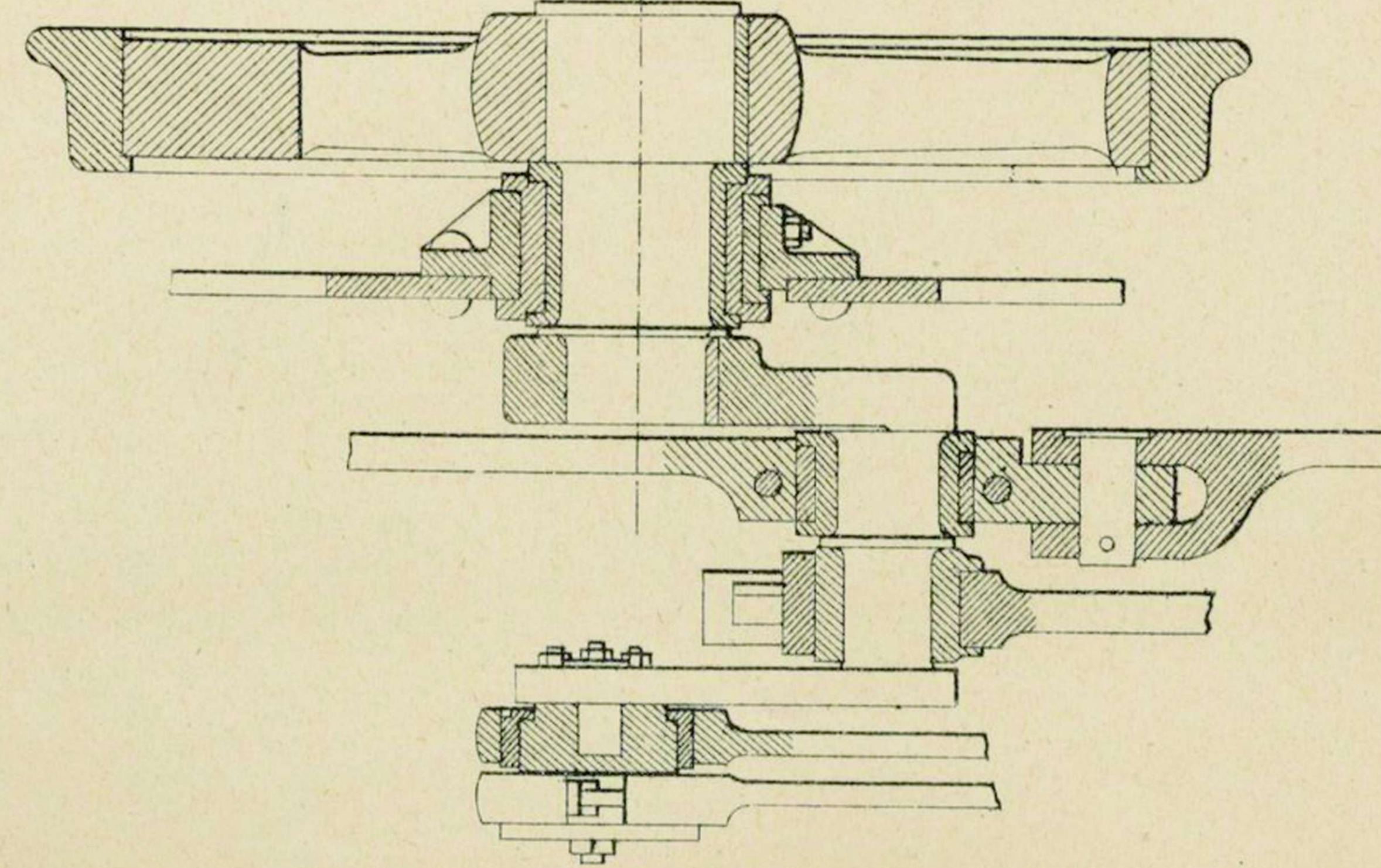


Fig.2 et 3.  
Distribution des Locomotives  
du Chemin de fer de  
Riom à Volvic.