

Fig.1. Coupe longitudinale et Plan.

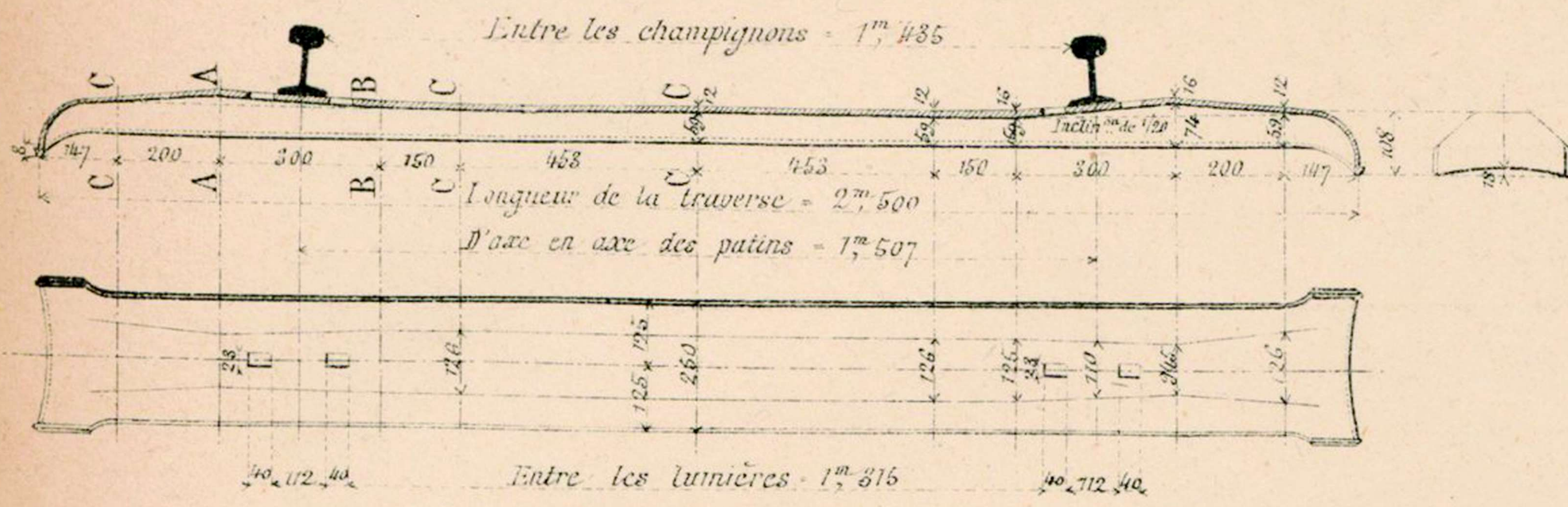


Fig.4. Attache du rail

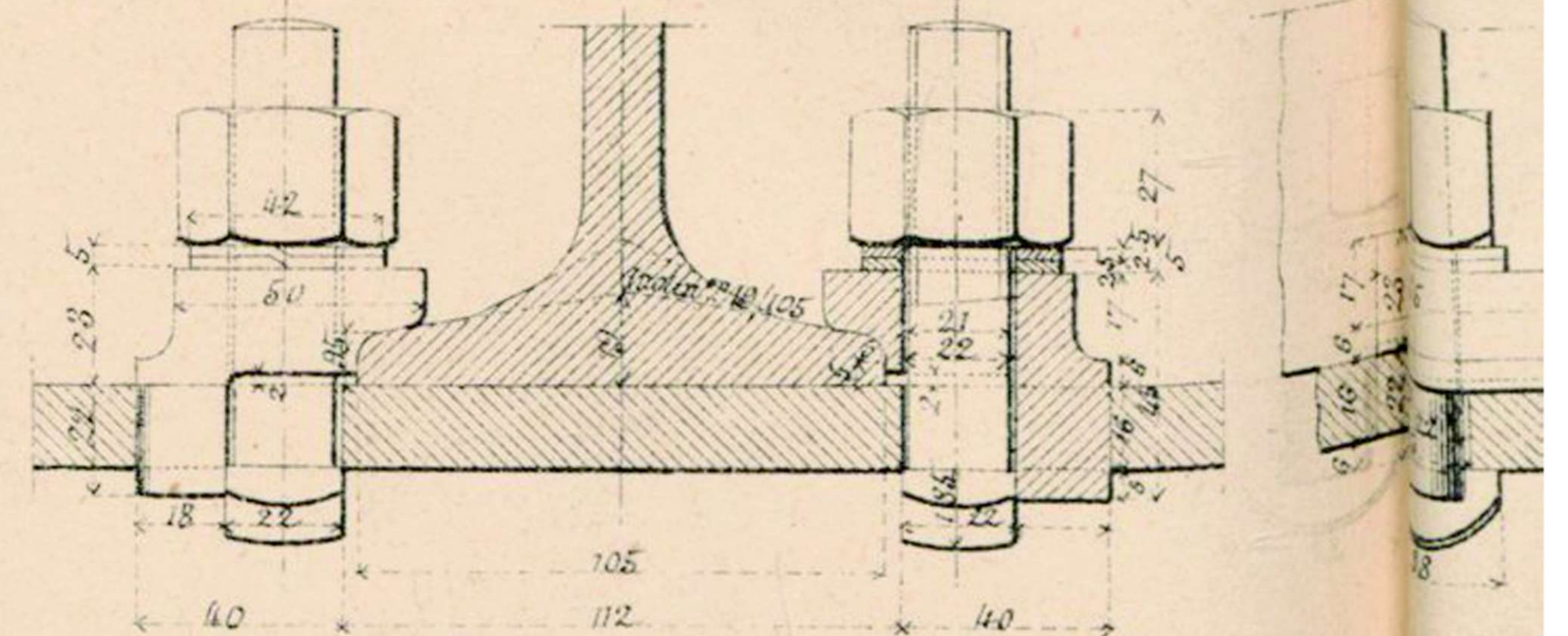


Fig.2. Echissage du joint.

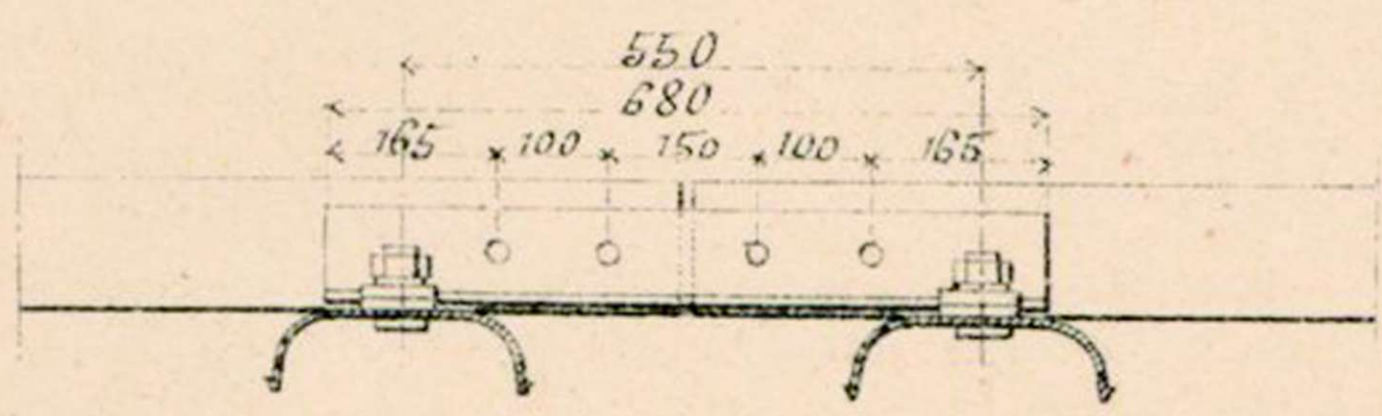


Fig.3. Sections transversales suiv^t AA, BB et CC.

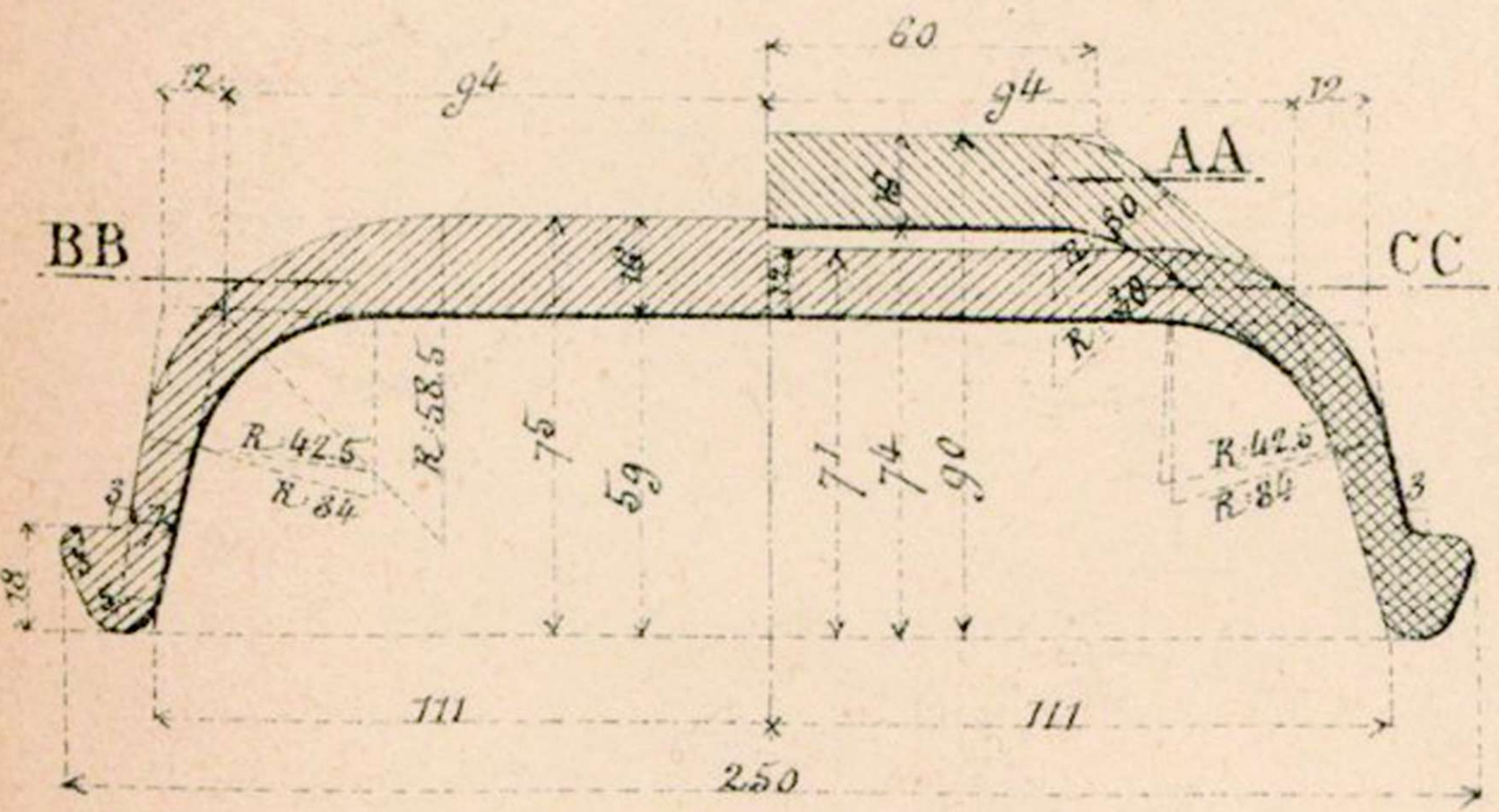


Fig.1 à 6. Voie sur traverses, modèle A (Post)

Fig.7 à 10. Voie sur traverses, modèle B (Braet)

Fig.6. Pose de la voie. (Même pose pour le modèle B Braet)



Fig.11. Profil de l'Eclisse

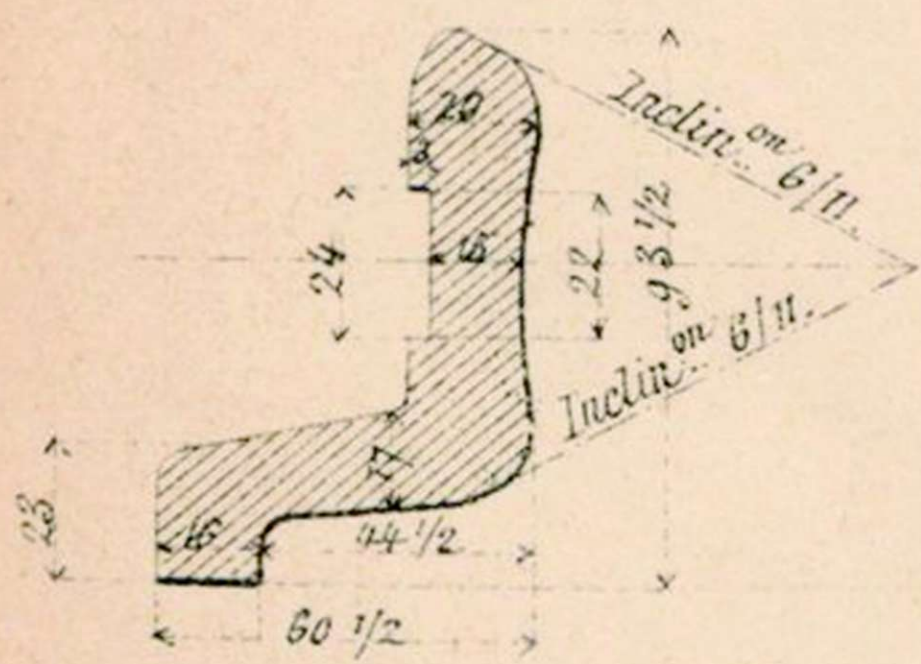


Fig.12. Coupe transversale.

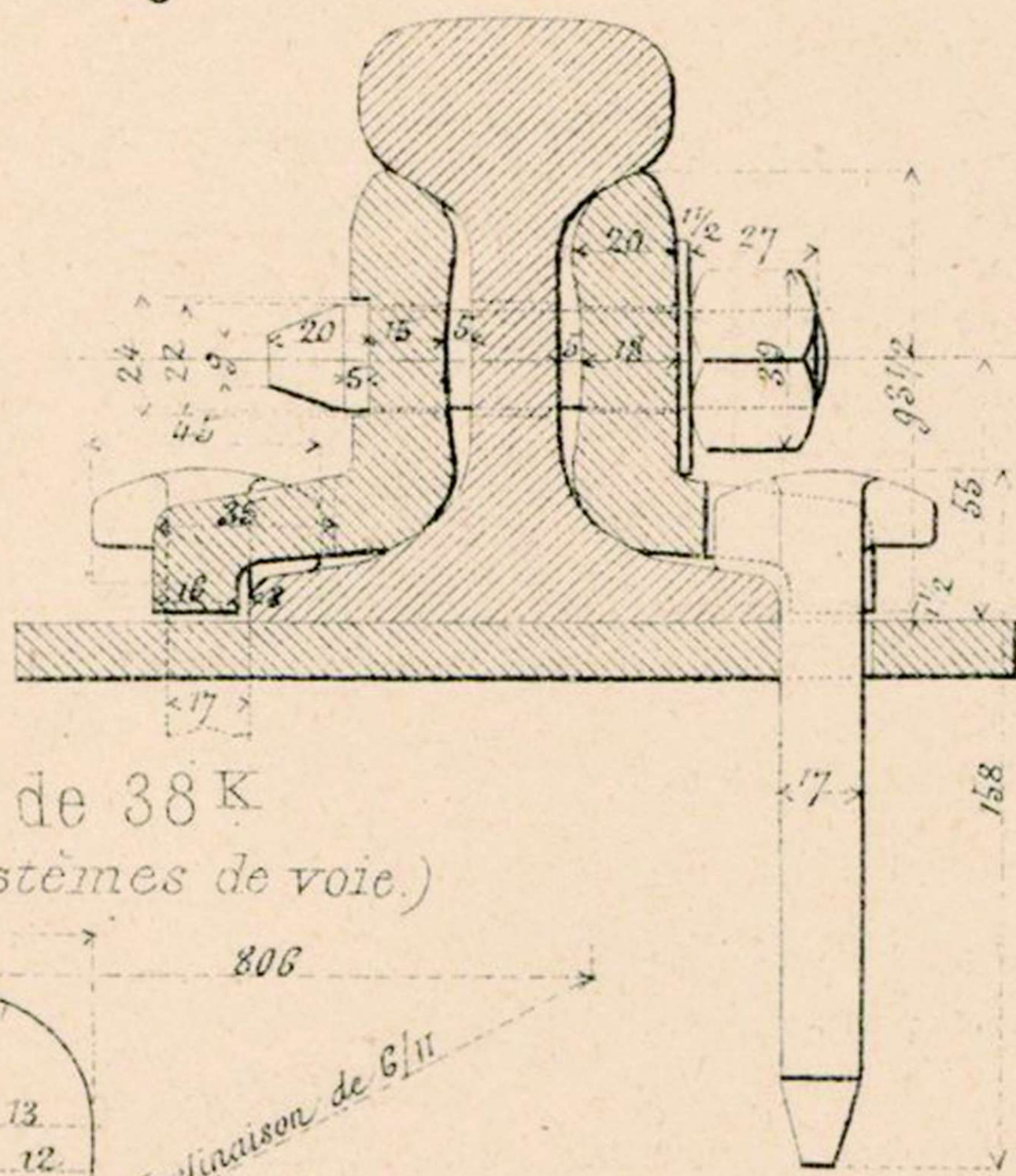
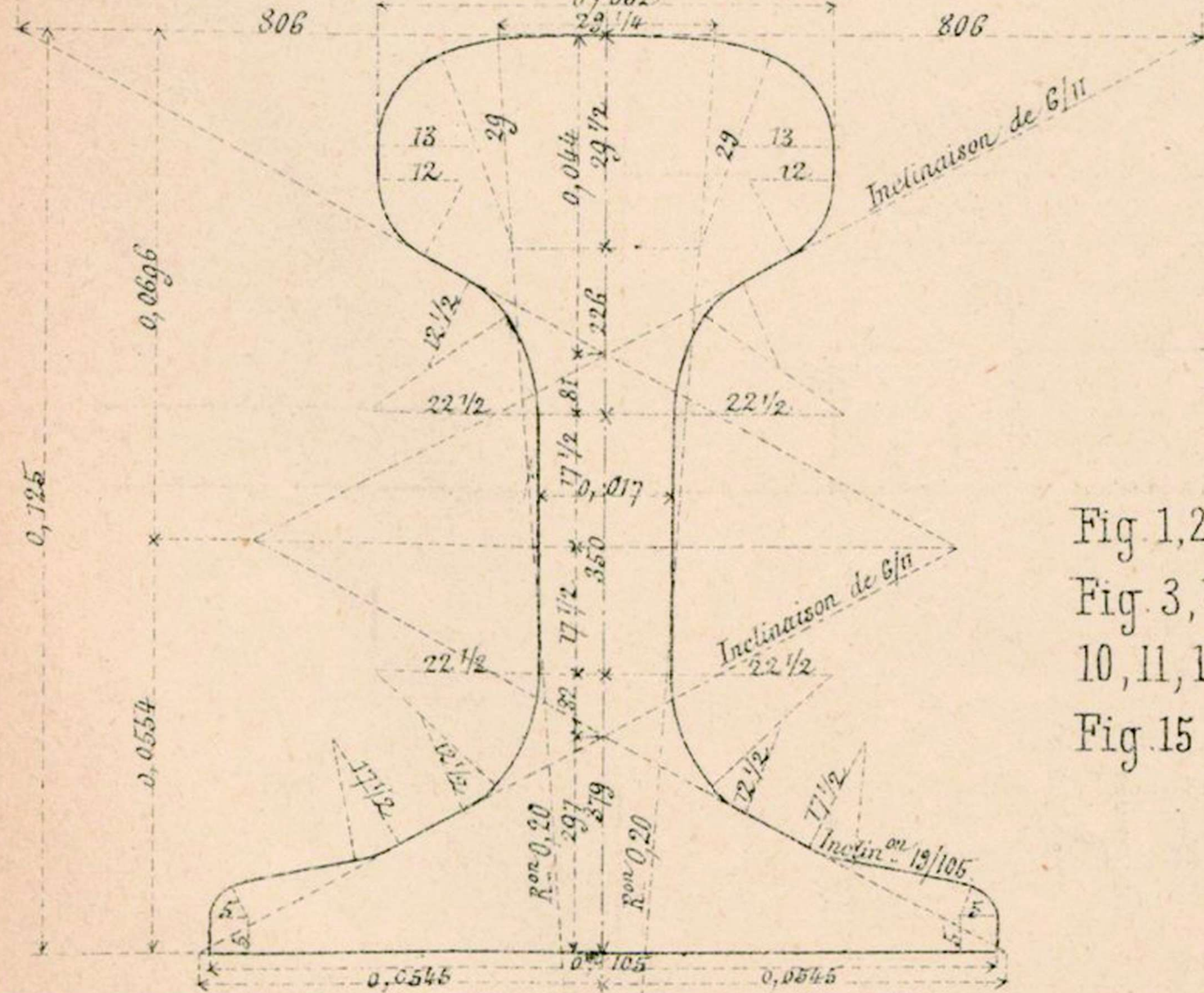


Fig.15. Profil du rail de 38 K

(Ce rail s'applique aux trois systèmes de voie.)

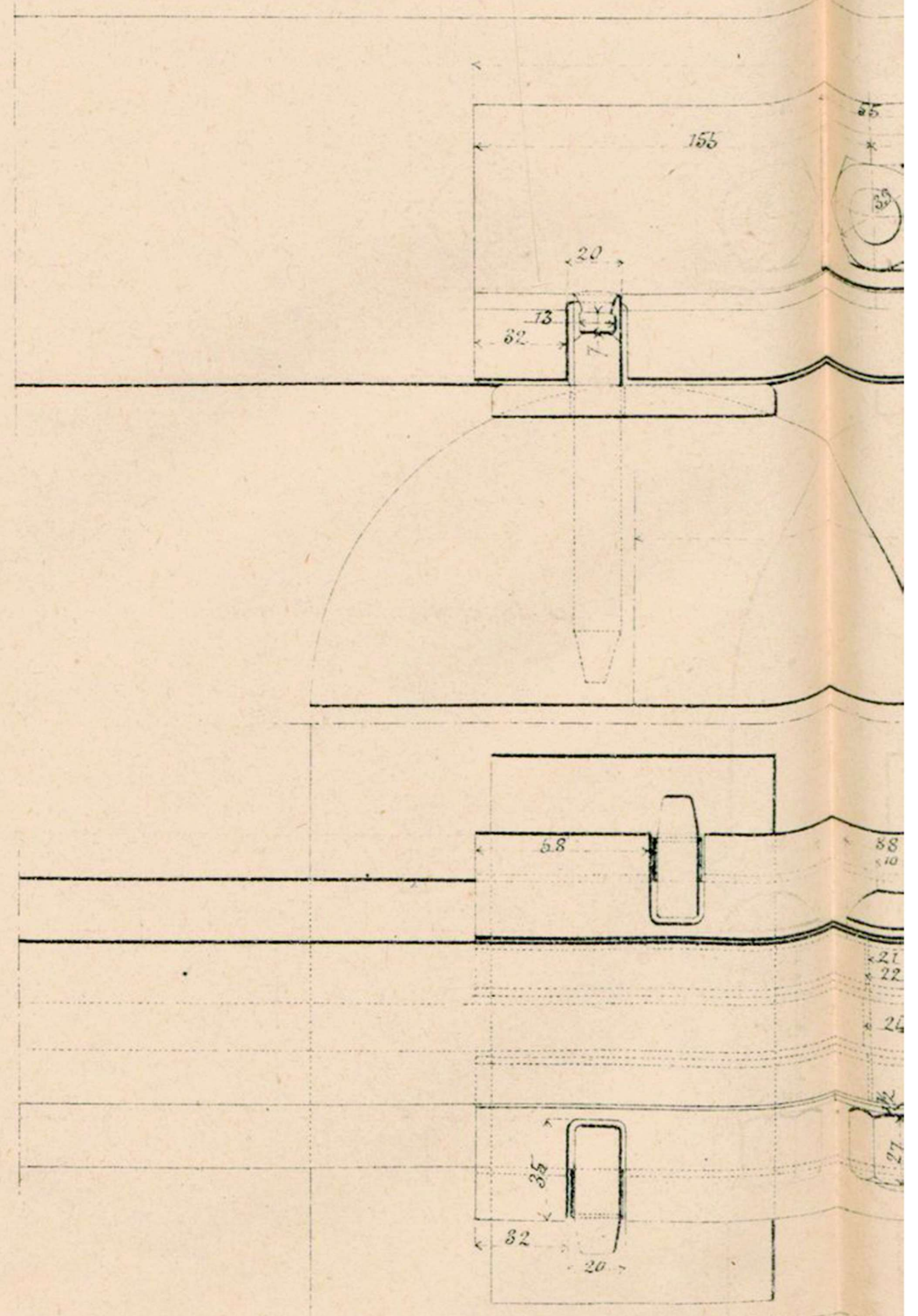


Echelles.

Fig 1,2,7 et 8 : 0^m04 p.m.
 Fig 3,4,5,6,9, } 0^m25 p.m.
 10,11,12,13 et 14 }
 Fig 15 : 1/2 Grandeur

Fig.11 à 14. Voie sur traverses en bois

Fig.12 à 14. Echissage du joint.



ail.

Fig. 5.

Profil des éclisses
(Ce profil s'applique au modèle
B. (Braet).)

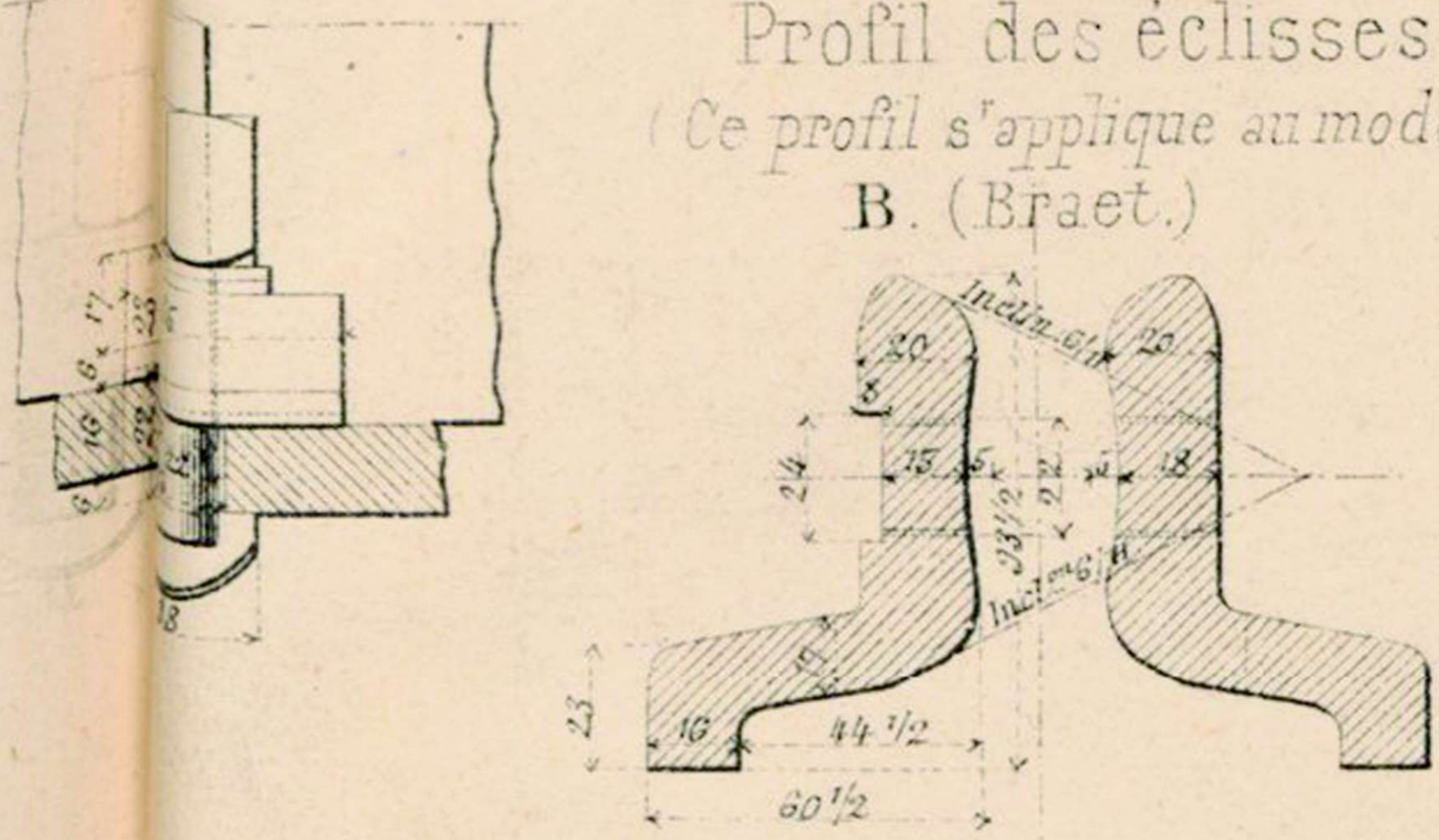


Fig. 7. Coupe longitudinale et Plan.

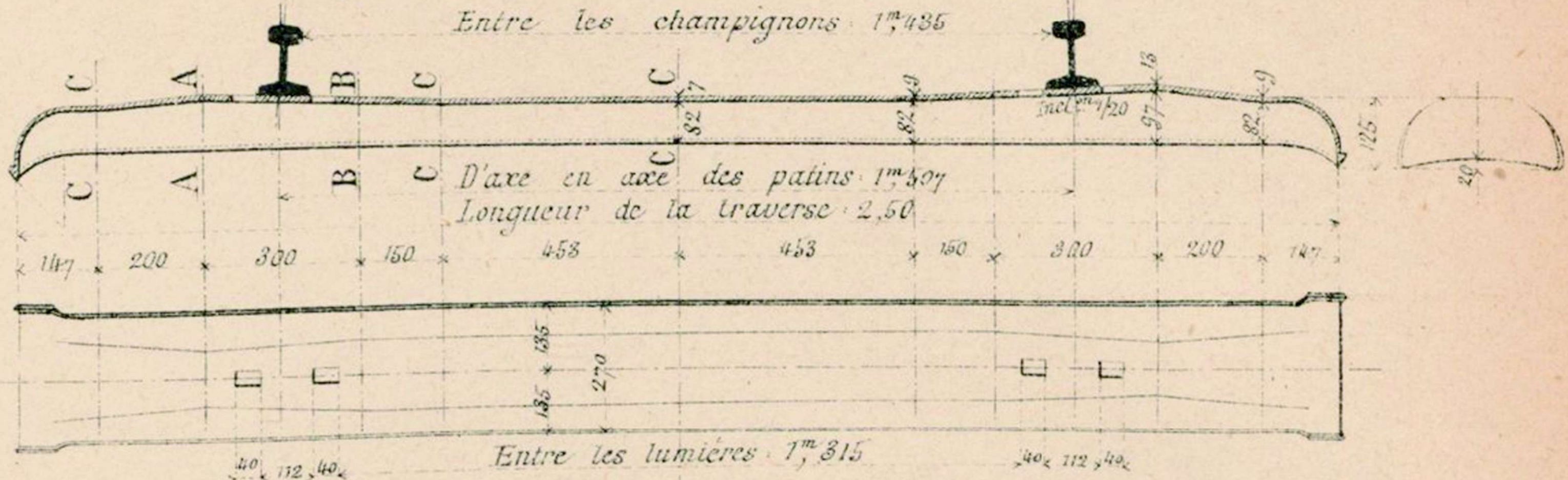


Fig. 9. Sections transversales sur v^t AA, BB et CC.

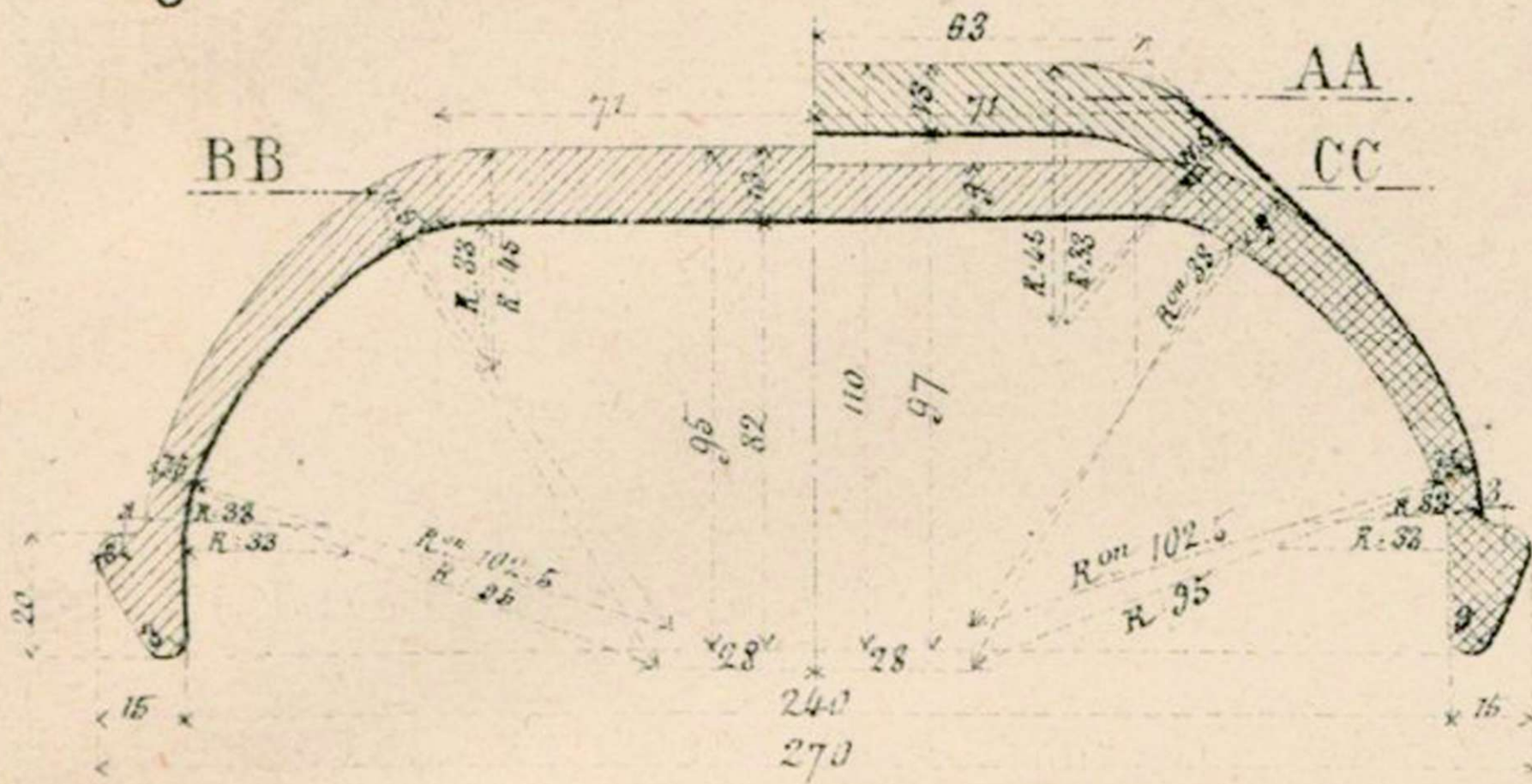


Fig. 8. Eclissage du joint

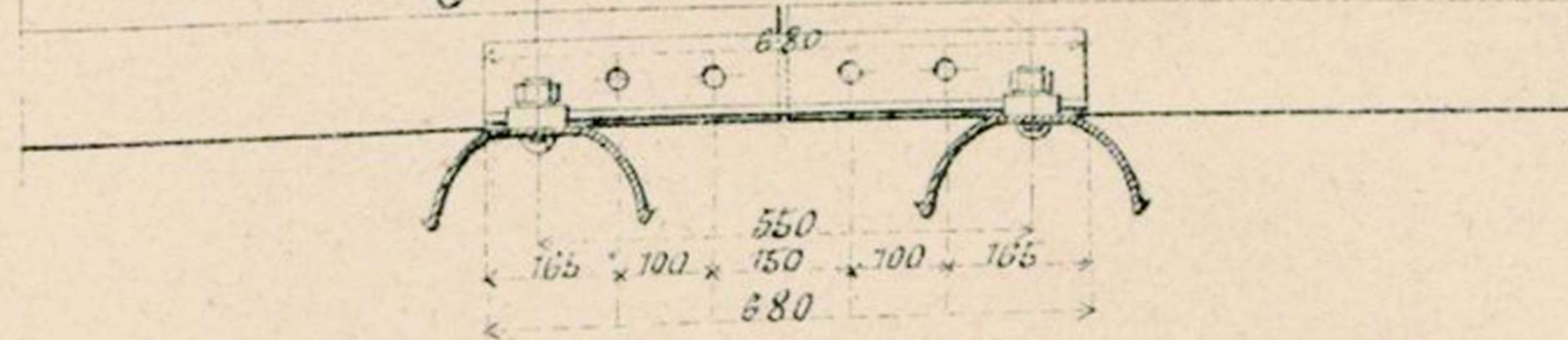
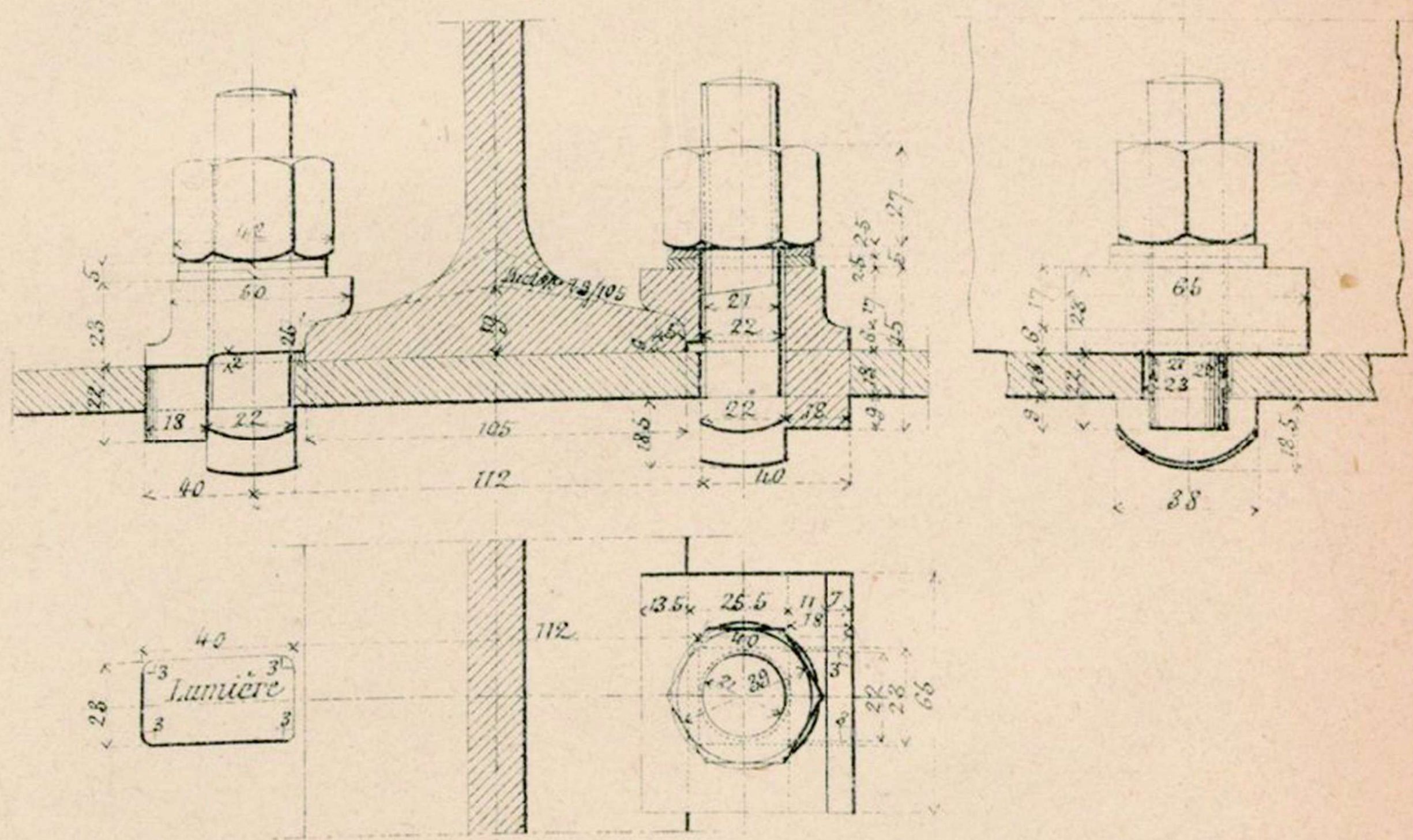
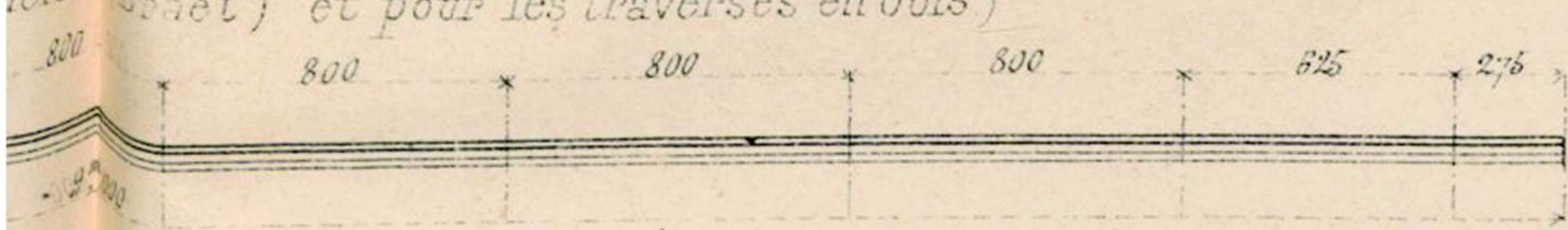


Fig. 10. Attache du rail.

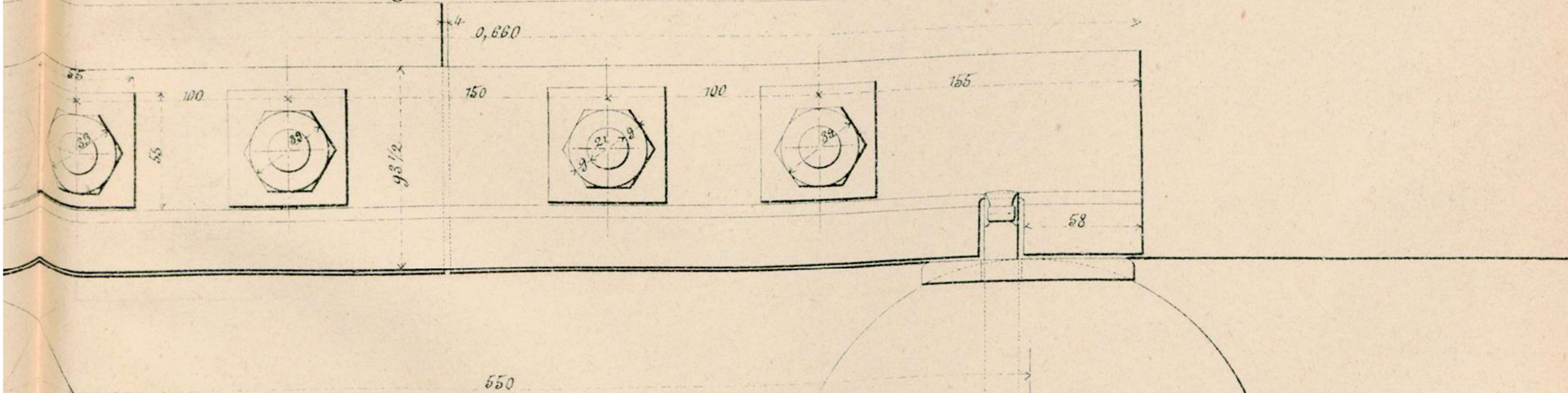


de la Braet) et pour les traverses en bois)



s en bois de chêne.
du joint.

Fig. 13. Elevation



les dimensions des traverses sont: 2^m60 x 0^m28 x 0^m14.

Fig. 14. Plan.

