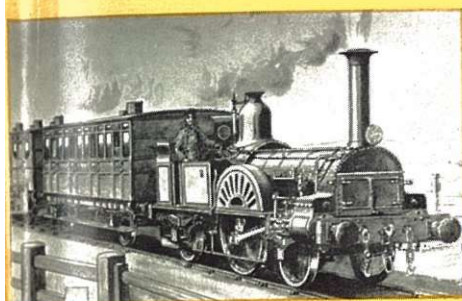
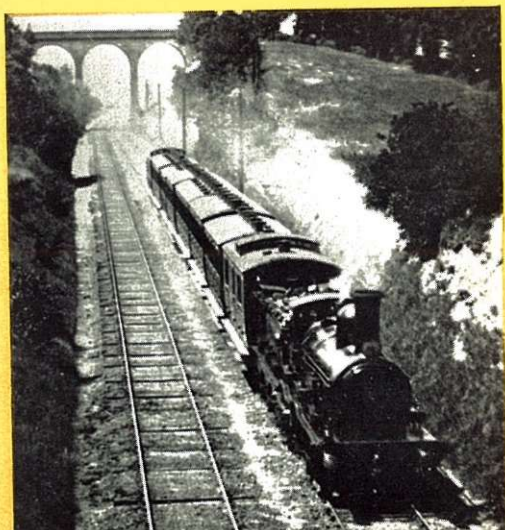


**A  
REGIONAL  
HISTORY  
OF THE RAILWAYS  
OF GREAT  
BRITAIN**



**Volume 2-Southern England**

Edited by **DAVID  
ST JOHN THOMAS  
& C.R. CLINKER**



**H.P.  
WHITE**

A REGIONAL HISTORY OF  
THE RAILWAYS OF GREAT BRITAIN

---

*Volume II*

SOUTHERN ENGLAND

by  
H. P. White

---

WITH FRONTISPIECE AND 36 PLATES  
9 ILLUSTRATIONS IN TEXT  
INCLUDING REGIONAL MAPS  
AND LARGE FOLDING MAP



PHOENIX HOUSE  
*LONDON*

---

## Contents

---

### LIST OF ILLUSTRATIONS · VII

I	RAILWAYS AND THE PERSONALITY OF SOUTHERN ENGLAND	I
	The social background · emphasis on passenger traffic · growth of London · Continental connections · the region's geology	
II	THE DAWN OF THE RAILWAY AGE	12
	Pre-railway transport · the Surrey Iron Railway · the Canterbury & Whitstable Railway · the London & Greenwich and London & Croydon Railways · three trunk lines	
III	KENT AND THE 'FEUD'	24
	Trunk line to Dover · the expansion of the South Eastern: Hastings · other lines · genesis of 'The Chatham', 1853-64 · 1864-99: the protagonists · the campaign in the field · 1861-99: political history · the SE & CR Managing Committee · Thanet · Folkestone, Dover and Deal · a third route to Dover · branch lines · other railways	
IV	SUSSEX AND THE BRIGHTON LINE (INCLUDING SOUTH SURREY)	72
	The main line · Brighton · the 'East Coast' line · the Brighton Company · Tunbridge Wells, outpost in defence of Brighton · development of traffic · the 'West Coast' line · the Mid-Sussex line	
V	EAST HAMPSHIRE AND NORTH SURREY	108
	Beginnings of the South Western · the London & Southampton · the Portsmouth Direct · Portsmouth & District · Guildford · the military area · Reading and Windsor	

VI	SOUTHAMPTON AND THE ISLE OF WIGHT Southampton · cross-country links · Isle of Wight	135
VII	WEST HAMPSHIRE The drive to the west · Bournemouth	153
VIII	DEVELOPMENT OF MAIN LINE SERVICES, 1845-1923 The South Eastern · the London, Chatham & Dover · the Managing Committee · the Brighton · the London & South Western · postscript	164
IX	THE 'SOUTHERN' AND ELECTRIFICATION POLICY The creation of the 'Southern' · suburban electrifi- cation · the effects of electrification · main line electrification · 'Southern Electric' · Southern Region —the unfinished chapter	179
	BIBLIOGRAPHY AND ACKNOWLEDGMENTS	205
	INDEX	209

---

## *Illustrations*

---

### PLATES

#### *frontispiece*

An idealized view of an early excursion train on the South Eastern Railway

*facing page*

1	The top-hatted station master of 1890 at Tunbridge watches the Continental 'Club' train making for Dover	38
2	His successor of 1958 watches the 9.20 a.m. diesel-electric train from Charing Cross to Hastings preparing to stop	38
3	Trains were marshalled by manpower at Tunbridge Wells in 1845	39
4	A present-day view of Tunbridge Wells Central	39
5	Luxury travel in 1900	39
6	An impression of an up 'Mail' of the SER about 1850	54
7	A down boat train of the LCDR in the mid 1880s	54
8	An 'M3' class 4-4-0 heads a down Continental express, 1898	54
9	An SE & CR boat train of 1920	55
10	The all-Pullman 'Golden Arrow', 1956	55

#### *between pages 94 and 95*

11	Ramsgate Town station of the SER about 1910
12	Ramsgate Harbour station dealing with holiday traffic, 1925
13	The massive façade of Margate station
14	An SER roadside station of 1842 - Pluckley
15	Teynham, typical of the severely plain LCDR stations
16	Lewes, 1881, the second permanent station
17	Gatwick Airport station, opened 1958
18	Redhill, 1838
19	Redhill Junction station, about 1865
20	Redhill station in 1935

	<i>facing page</i>
21 Interior view of Brighton, 1940	118
22 Lingfield, typical of country stations on the LBSCR	118
23 Godalming Old station	119
24 Blechynden station, 1920	119
25 Guildford in 1850	134
26 Guildford in the 1940s	134
27 The classical frontage of Southampton Terminus	135

*between pages 158 and 159*

28 A handbill of 1846	
29 An impression of an LSWR local train	
30 A 'Paddlebox' 4-6-0 heads a local train on the Portsmouth Direct	
31 An Isle of Wight Railway train prior to the first world war	
32 A down local train near Knockholt, 1920	
33 The pre-war 'Bournemouth Belle'	
34 Electric set for the 'Brighton Belle'	
35 A double-decker unit introduced in 1949	
36 A train of electric stock, Kent Coast electrification, 1959	